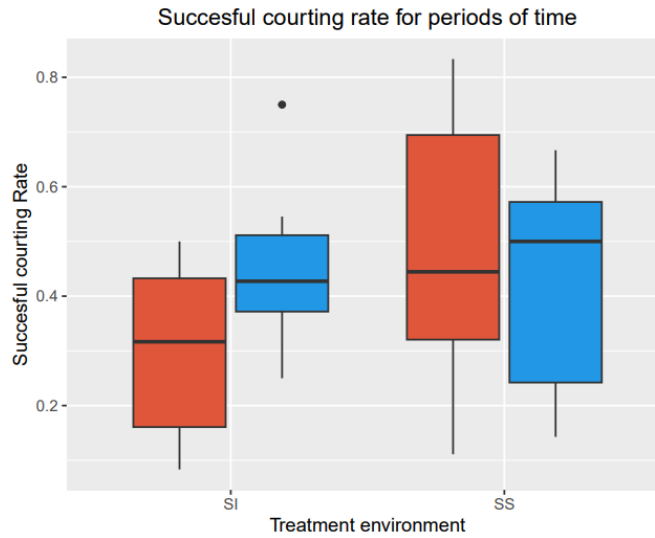


ANEXOS



Supplementary figure 1: Successful courting rate for individuals exposed to SI and SS for each period. Red colors represent the acute period and blue represents the medium period.

Supplementary table 1. Ethogram of guinea pigs.

<i>Behavior</i>	<i>Description</i>
Affiliative behaviors:	
Grooming (State)	One guinea grooming (softly biting the fur off) another, usually concentrated in places the subject cannot reach (back of neck)
Sitting distantly (State)	Two or more guineas sitting within 30 centimeters or less from each other but not in body contact.
Forage far from source (State)	Guineas are together feeding in an area different from the source within ~30 centimeters from each other or moving together
Forage in source (State)	Guineas are together feeding from the central bag of hay.
Sniff body (Event)	Initiator guinea sniffs any part of the body excluding the butt-end area of the receiver
Sitting in body contact (State)	Two or more guineas sitting in physical contact with each other.
Greet (Event)	Initiator guinea touches the nose of receiver guinea with its nose

Sniff anal-genital region (Event)	Initiator guinea sniffs butt-end of receiver guinea
Agonistic behaviors:	
Chasing (State)	Initiator guinea chases receiver guinea in an aggressive manner
Biting (Event)	Initiator guinea bites receiver guinea in an aggressive manner
Boxing (State)	Stands on hind legs, using paws to strike an opponent in an aggressive manner
Wrestling (State)	Initiator guinea and receiver guinea wrestle with each other in an aggressive manner
Pounce (Event)	Initiator guinea pounces on receiver guinea in an aggressive manner
Haze (Event)	The initiator guinea pig moves rapidly to scare away the receiver guinea pig, which reacts in a quick movement moving away from the initiator.
Stand Off (State)	The initiator guinea pig stands in a menacing position with locked eyes on the receiver guinea pig, which is also in a menacing position looking directly at the initiator. Both guinea pigs can move while this is occurring but the position and locking eyes are continuous.
Aggressive mounting (State)	The initiator guinea pig (female) mounts the receiver guinea pig (female). Initiator biting the back and neck of the receiver may occur.
Courtship behaviors:	
Nose-Nose sniffing (Event)	The initiator (male) touches the receiver (female) nose.
Intensive anal-genital sniffing (Event)	The initiator (male) sniffs the butt-end of the receiver (female) guinea pig for at least one second. This behavior may be accompanied by anal-genital licking.
Grooming (State)	Initiator (male) grooming (softly biting the fur) of the receiver (female).

Following the female
(State)

The initiator (male) follows the receiver
(female) across the enclosure.

Chin-rump follow.
(State)

The initiator (male) follows the receiver
(female) around while putting its chin against the
butt-end of the female. The initiator may be seen
moving its head rhythmically in the butt-end
zone.

Rumba
(State)

The initiator (male) approaches the receiver
(female) slowly while stepping rhythmically
from one side to another.

Circle
(State)

The initiator (male) starts circling the receiver
(female). The head of the receiver can be
lowered or moved to the sides while on display.

Tail up
(Event)

The initiator (female) lifts its butt-end area
towards the receiver (male). This behavior can
be accompanied by urine spray.