

CORRIGENDUM • OPEN ACCESS

Corrigendum: 'The Paramo Fire Atlas: quantifying burned area and trends across the Tropical Andes' (2025 *Environ. Res. Lett.* [20 054019](#))

To cite this article: Laura Obando-Cabrera *et al* 2025 *Environ. Res. Lett.* **20** 109501

View the [article online](#) for updates and enhancements.

You may also like

- [Permafrost vulnerability to climate change: understanding thaw dynamics and climate feedback of permafrost degradation](#)
Jing Tao, Anna K Liljedahl, Christopher R Burn *et al.*
- [Whitebark pine in the United States projected to experience an 80% reduction in climatically suitable area by the mid-21st century](#)
Sean A Parks, Kira L Hefty, Jaclyn F Rushing *et al.*
- [Hotspots of extreme runoff across Arctic land ice](#)
Josep Bonsoms, Xavier Fettweis, Marc Oliva *et al.*

ENVIRONMENTAL RESEARCH LETTERS

CORRIGENDUM

Corrigendum: ‘The Paramo Fire Atlas: quantifying burned area and trends across the Tropical Andes’ (2025 *Environ. Res. Lett.* **20** 054019)

Laura Obando-Cabrera^{1,2,*}, Jhonatan Julián Díaz-Timoté², Aitor Bastarrrika^{3,4}, Nathalia Celis² and Stijn Hantson²

- ¹ Yale School of the Environment, Yale University, New Haven, CT, United States of America
 - ² Faculty of Natural Sciences, Universidad del Rosario, Bogotá, Colombia
 - ³ School of Engineering of Vitoria-Gasteiz, University of the Basque Country UPV/EHU, Vitoria-Gasteiz, Spain
 - ⁴ Built Heritage Research Group, University of the Basque Country UPV/EHU, Vitoria-Gasteiz, Spain
- * Author to whom any correspondence should be addressed.

E-mail: laura.obandocabrera@yale.edu



OPEN ACCESS

RECEIVED
17 June 2025

ACCEPTED FOR PUBLICATION
14 August 2025

PUBLISHED
2 September 2025

Original content from this work may be used under the terms of the [Creative Commons Attribution 4.0 licence](https://creativecommons.org/licenses/by/4.0/).

Any further distribution of this work must maintain attribution to the author(s) and the title of the work, journal citation and DOI.



Correction to figure 3:

In panel (c), two values of the observed PFA data were incorrect.

The corrected version of figure 3 is provided below.

- The value for the year 1999 should be 200 km².
- The value for the year 2001 should be 375 km².

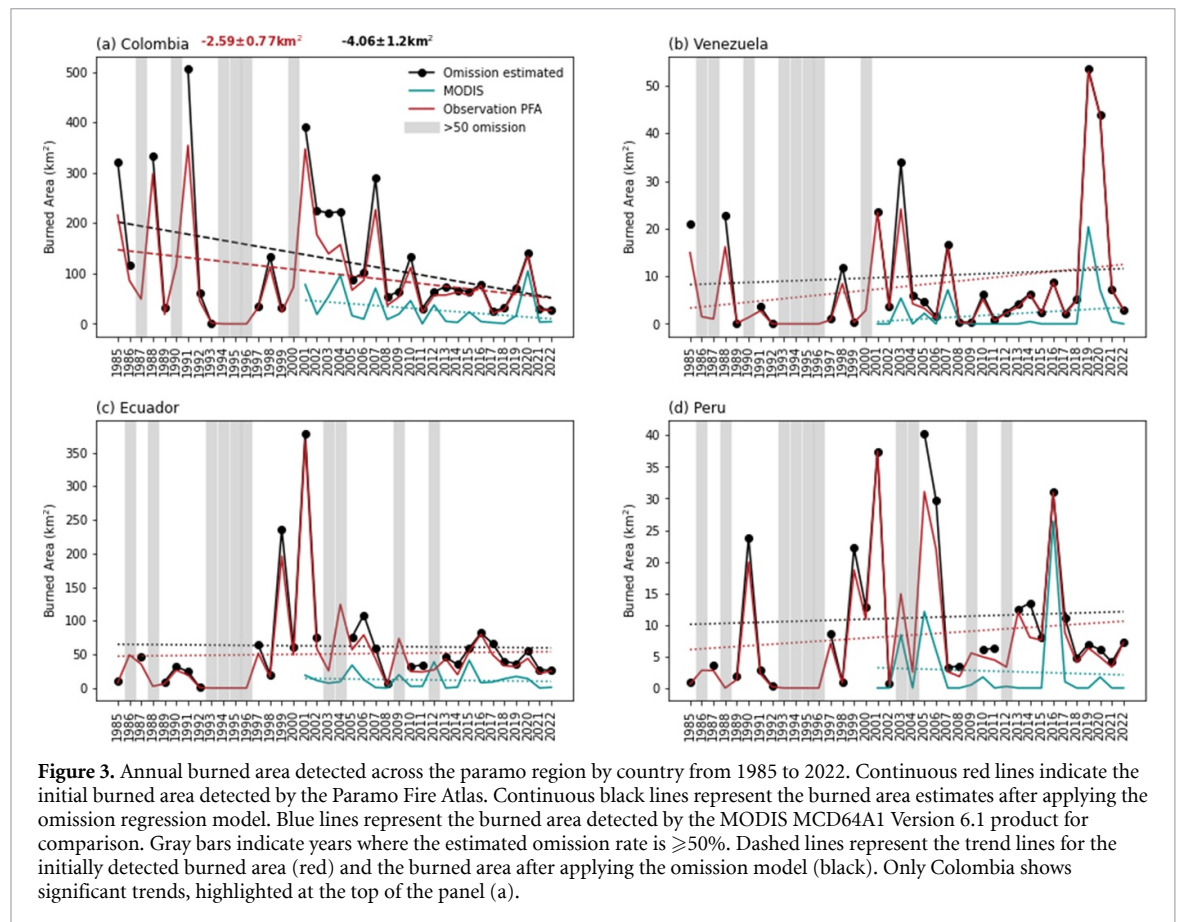



Figure 3. Annual burned area detected across the paramo region by country from 1985 to 2022. Continuous red lines indicate the initial burned area detected by the Paramo Fire Atlas. Continuous black lines represent the burned area estimates after applying the omission regression model. Blue lines represent the burned area detected by the MODIS MCD64A1 Version 6.1 product for comparison. Gray bars indicate years where the estimated omission rate is $\geq 50\%$. Dashed lines represent the trend lines for the initially detected burned area (red) and the burned area after applying the omission model (black). Only Colombia shows significant trends, highlighted at the top of the panel (a).

These corrections do not affect the scientific analysis or conclusions of the article.

ORCID iDs

Laura Obando-Cabrera  [0000-0002-7201-7309](https://orcid.org/0000-0002-7201-7309)

Jhonatan Julián Díaz-Timoté 

[0000-0002-1169-9799](https://orcid.org/0000-0002-1169-9799)

Nathalia Celis  [0000-0002-7496-8351](https://orcid.org/0000-0002-7496-8351)

Stijn Hantson  [0000-0003-4607-9204](https://orcid.org/0000-0003-4607-9204)