



## **Social integration of new individuals to stable social groups**

Sofía Carolina Garrido Villegas

**Directora**

Adriana A. Maldonado-Chaparro

Departamento de Biología  
Facultad de Ciencias Naturales  
Universidad Del Rosario

2024

## SUPPLEMENTARY MATERIAL

**A.**



**B.**



**Figure S1.** Food allocation test design. **A.** Diagram representing test design. Two stop-watches were used to time the individuals over the amount of time the broccoli was in their possession (one stop-watch per individual). The lines show the individuals were equidistant to the food. **B.** Real-time trial set up.

**A.**



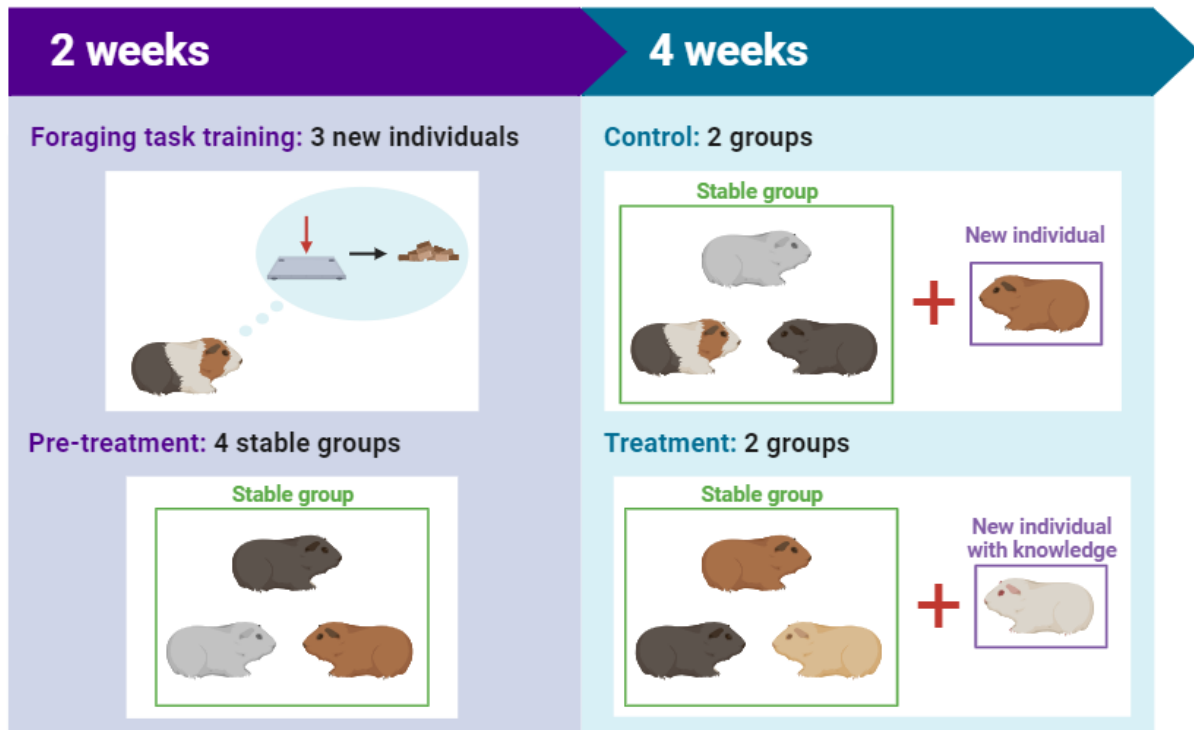
Funnel

Push-down  
platform

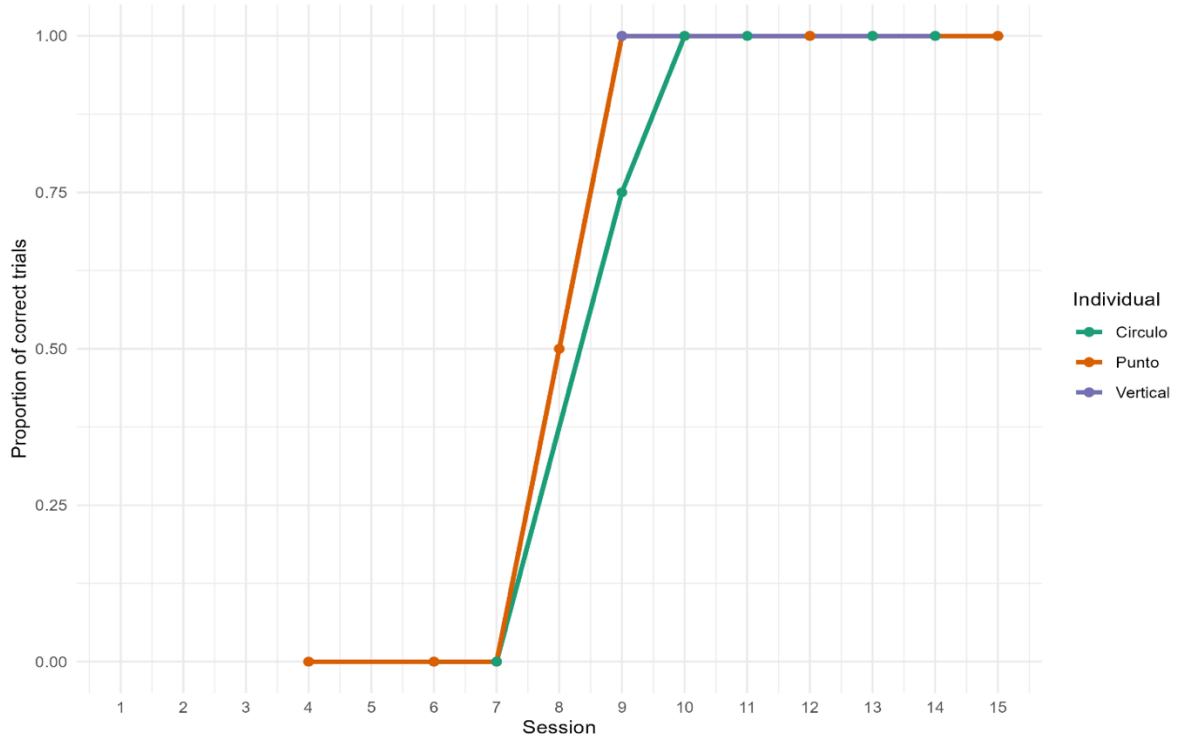
**B.**



**Figure S2.** Foraging device. **A.** Labelled parts of the device. The individual has to press down on the platform to access the alfalfa cubes inside the funnel. **B.** The push-down platform and funnel are far from the floor which added a layer of difficulty to obtain the reward.



**Figure S3.** Timeline for data collection. The left panel shows the pre-treatment phase which includes training three new individuals in the foraging task and characterizing the social relationships in the pre-established groups. The right panel shows the treatment phase. The experiment consists of a treatment (knowledgeable individual) and a control (naïve individual) with two replicas each.



**Figure S4.** Graph showing the learning curves of the three trained individuals (Circulo, Punto and Vertical) over fifteen sessions (one per day). The x-axis plots the proportion of correct trials per individual.

**Table S1.** Dominance hierarchy ranking per group using David's score and Elo-rating (original and randomized). \*indicates most dominant individual.

Group	David's score			Original Elo-rating		Randomized Elo-rating
	DS	NormDS	Rank	Rating	Rank	Rank
<b>Group 1</b>						
Equis*	1.2	1.4	1/2	206.84	1	1.4/1.5
Dospuntos*	1.2	1.4	1/2	30.73	2	1.4/1.5
Horizontal	-2.4	0.2	3	-237.57	3	3.0
<b>Group 2</b>						
Vertical*	1.8	1.6	1	200.64	1	1.1
Punto	0.0	1.0	2	35.18	2	1.9
Igual	-1.8	0.4	3	-235.83	3	2.8
<b>Group 3</b>						
Sombrero*	1.8	1.6	1	227.59	1	1.2
Punto	0.6	1.2	2	19.97	2	1.7
Vertical	-2.4	0.2	3	-247.56	3	3.0
<b>Group 4</b>						
Circulo*	1.8	1.6	1	102.27	1	1.2
Dospuntos	-0.6	0.8	2	52.19	2	2.3
Equis	-1.2	0.6	3	-154.46	3	2.5